

FOR LEASE

MEG Place
1001 - 1st Street SE
Calgary, Alberta

Your Company Name
Here



HIGHLIGHTS

- Approx. 33,000 sq ft attractive corner plot office premises fronting 10th Avenue and 1st Street SE offering high exposure.
- Second and third floor office accommodation.
- Common area entrance facility with elevators to all floors within 1001- 1st Street SE.
- Heated underground parkade.

Steven Butt
403-802-6767
sbutt@avenuecommercial.ca

Ben Oldfield
403-802-6766 ext 248
boldfield@avenuecommercial.ca

Suite 300, 1324 11th Avenue SW
Calgary, AB T3C 0M6
T. 403-802-6766
www.avenuecommercial.ca

F. 403-802-6768

AVENUE
COMMERCIAL

Creating Superior Real Estate Solutions

This brochure is intended for information purposes only and should not be relied upon for accurate factual information by the recipients hereof. The information contained herein is based on information which Avenue Commercial deems reliable. The information contained herein is subject to change without notice.

FOR LEASE

MEG Place 1001 - 1st Street SE Calgary, Alberta

PROPERTY DESCRIPTION

Address: 1001- 1st Street S.E.

Rentable Area: Suite 200 & Suite 300
33,000 sq ft

Date Available: October 1st 2012

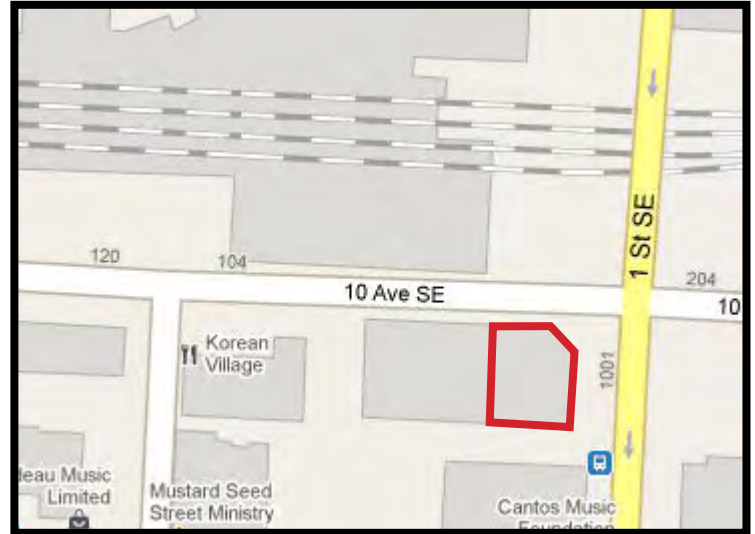
Asking Rent: Market

Op Costs: \$13.88 psf est. 2011

Parking: Heated underground and surface parking available

Naming Rights: Available via separate negotiation

LOCATION MAP



INTERIOR



Steven Butt
403-802-6767
sbutt@avenuecommercial.ca

Ben Oldfield
403-802-6766 ext 248
boldfield@avenuecommercial.ca

Suite 300, 1324 11th Avenue SW
Calgary, AB T3C 0M6
T. 403-802-6766 F. 403-802-6768
www.avenuecommercial.ca

AVENUE COMMERCIAL

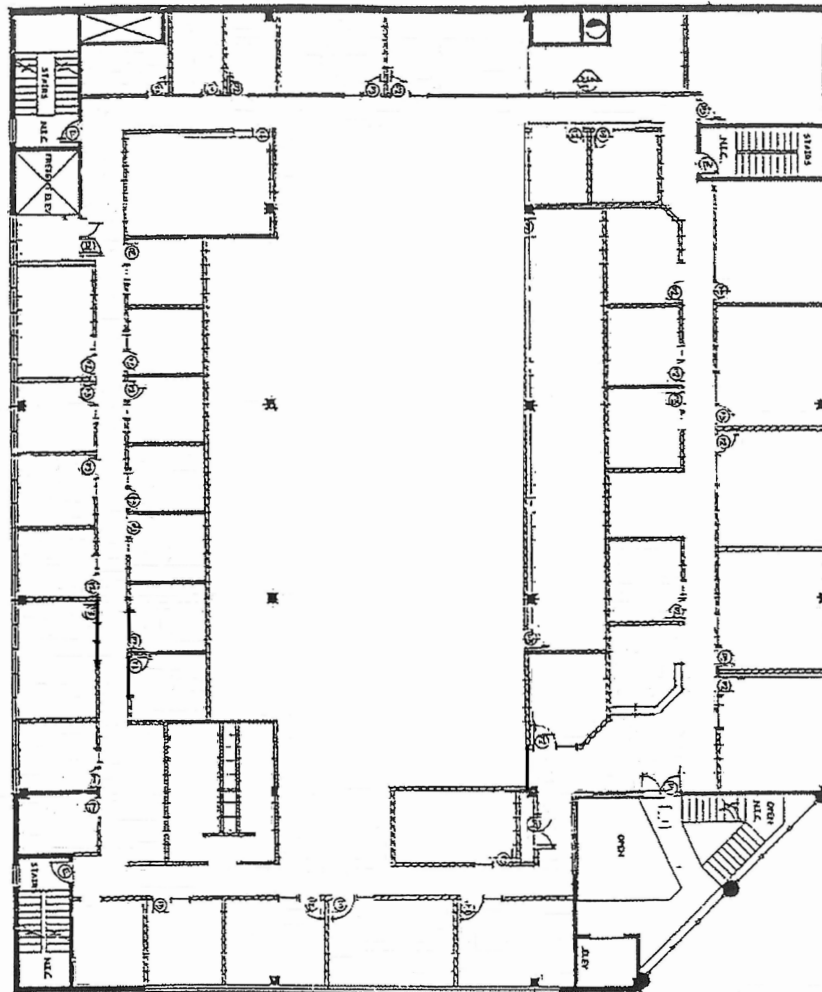
Creating Superior Real Estate Solutions

This brochure is intended for information purposes only and should not be relied upon for accurate factual information by the recipients hereof. The information contained herein is based on information which Avenue Commercial deems reliable. The information contained herein is subject to change without notice.

FOR LEASE

MEG Place
1001 - 1st Street SE
Calgary, Alberta

2ND FLOOR PLAN



Steven Butt
403-802-6767
sbutt@avenuecommercial.ca

Ben Oldfield
403-802-6766 ext 248
boldfield@avenuecommercial.ca

Suite 300, 1324 11th Avenue SW
Calgary, AB T3C 0M6
T. 403-802-6766
www.avenuecommercial.ca

F. 403-802-6768

AVENUE
COMMERCIAL

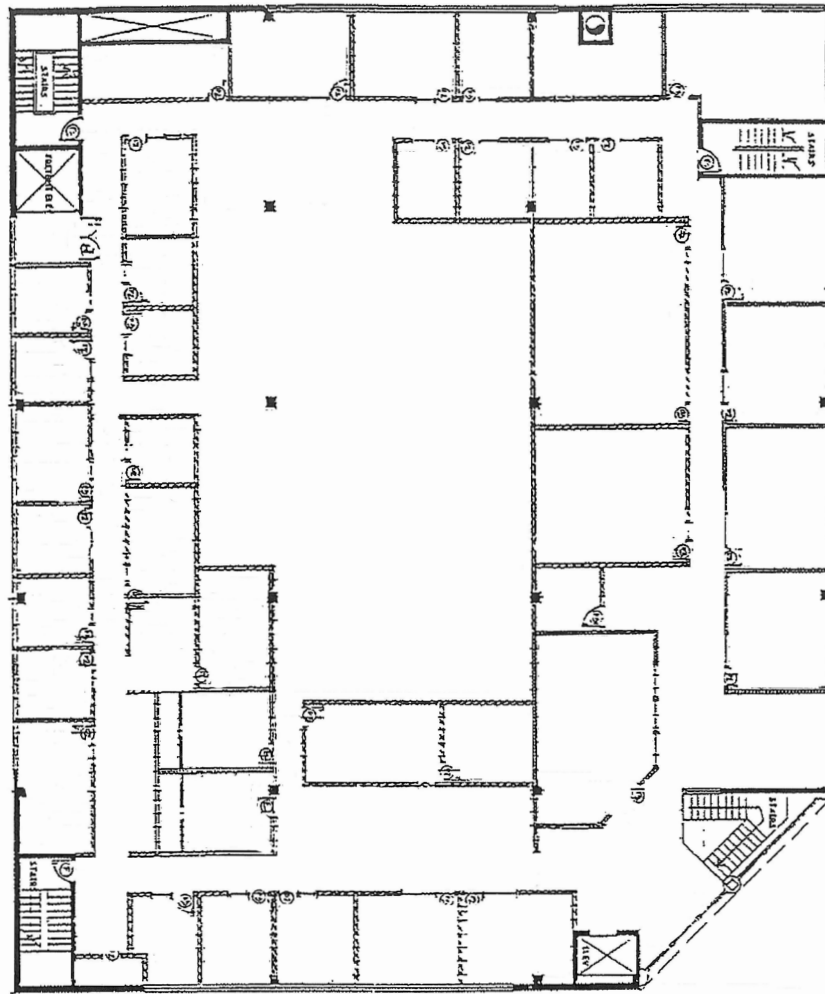
Creating Superior Real Estate Solutions

This brochure is intended for information purposes only and should not be relied upon for accurate factual information by the recipients hereof. The information contained herein is based on information which Avenue Commercial deems reliable. The information contained herein is subject to change without notice.

FOR LEASE

MEG Place
1001 - 1st Street SE
Calgary, Alberta

3RD FLOOR PLAN



Steven Butt
403-802-6767
sbutt@avenuecommercial.ca

Ben Oldfield
403-802-6766 ext 248
boldfield@avenuecommercial.ca

Suite 300, 1324 11th Avenue SW
Calgary, AB T3C 0M6
T. 403-802-6766
www.avenuecommercial.ca

F. 403-802-6768

AVENUE
COMMERCIAL

Creating Superior Real Estate Solutions

This brochure is intended for information purposes only and should not be relied upon for accurate factual information by the recipients hereof. The information contained herein is based on information which Avenue Commercial deems reliable. The information contained herein is subject to change without notice.